



CTX_D001_Seven Seas Explorer Whittier to Vancouver 2026



Luxury Cruise Seven Seas Explorer WHITTIER -TO- VANCOUVER

Period 19-26 August 2026 | 7 Nights

ราคาเริ่มต้น USD 6,499.- / ต่อท่าน

(**ราคาไม่รวม ตัวเครื่องบิน)

ITINERARY

DATE		PORT	ARRIVE	DEPART
Aug-19	Wed	Whittier, Alaska	-	7:00 PM
Aug-20	Thu	Cruising Hubbard Glacier, Alaska	-	-
Aug-21	Fri	Sitka, Alaska	8:00 AM	6:00 PM
Aug-22	Sat	Cruising Holkham Bay Glacier Fjords	-	-
Aug-23	Sun	Klawock, Alaska	7:00 AM	4:00 PM
Aug-24	Mon	Cruising the Inside Passage	-	-
Aug-25	Tue	Victoria, British Columbia	11:00 AM	8:00 PM
Aug-26	Wed	Vancouver, British Columbia	6:00 AM	-

Day 1 Whittier, Alaska**Depart 7:00 PM**

Keep your binoculars handy to spot seals, otters and whales. Whittier is the gateway to Prince William Sound, where you can experience incredible glacier cruises and kayak in serene waters. Its unique "one-way-in" tunnel adds to the adventure. The town also provides access to nearby hiking trails and a fascinating WWII history, making it a perfect stop for nature lovers and history enthusiasts alike.

Day 2 Cruising Hubbard Glacier, Alaska

Viewing the magnificent grandeur of immense glaciers is surely one of the highlights of a journey to Alaska. Sail along a cliff face over six miles wide, 300 to 400 feet from peak to sea level and 300 feet from sea level to the bottom. As Hubbard Glacier advances, listen to the symphony of creaks and groans as it moves and calves. This makes for some exciting moments when the huge chunks of ice crash into the bay creating a wonderful sound called 'white thunder' by the Tlingit people. Please be advised that due to the under-developed nature of this destination, organized tours are not available.

Day 3 Sitka, Alaska**Arrive 8:00 AM | Depart 6:00 PM**

Founded by Russian fur traders as New Archangel in 1799, Sitka was the historic center of Russia's Alaskan empire. The Russian flag was replaced by the Stars and Stripes when the United States purchased the Alaska territory in 1867. Today, picturesque Sitka, is known for its fishing industry, an annual summer classical music festival and, of course, its many historic visitor attractions. On a clear day Sitka, the only city in southeast Alaska that actually fronts the Pacific Ocean, rivals Juneau for the sheer beauty of its surroundings.

Day 4 Cruising Holkham Bay Glacier Fjords**Day 5 Klawock, Alaska****Arrive 7:00 AM | Depart 4:00 PM**

Nestled amongst lush rainforest typical of the Inside Passage, Klawock is an authentic pioneer town on the rugged central-western coast of Prince of Wales Island. Thriving wildlife that includes bears drawn to the salmon-rich Klawock River and extensive collections of totem poles promise a genuine Alaskan experience at this newly constructed port. Besides jaw-dropping wilderness, Klawock boasts an abundance of Tlingit cultural practices. At a carving shed, watch expert Tlingit artisans demonstrate the skills that have made their totem poles legendary.

Day 6 Cruising the Inside Passage**Day 7 Victoria, British Columbia****Arrive 11:00 AM | Depart 8:00 PM**

Victoria is a picture-perfect city exuding old-world charm, with fragrant and colorful flowers everywhere. Founded in 1843 by James Douglas of the Hudson's Bay Company, it was first known as Fort Victoria. By 1848, Vancouver Island was made a British colony. In 1868, Vancouver Island was incorporated with mainland British Columbia. Although it is a port city, Victoria is not as industrially oriented as Vancouver. The harbors, especially Inner Harbour, are dotted with pleasure crafts, ferries, and floatplanes.

Day 8 Vancouver, British Columbia**Depart 6:00 AM**

This gleaming city in the midst of natural splendor has its origins in a saloon built for miners on their way to the Yukon. Walk the cobblestone streets of Gastown for a sense of Vancouver's frontier history in what's become one of the city's most vibrant and unique areas. Explore the second largest Chinatown in North America on your way to Stanley Park, home to soaring old-growth trees and a spectacular collection of First Nation totem poles. Breathtaking views abound: Travel to Vancouver's Peak on the Grouse Mountain skyride and walk the Capilano Suspension Bridge for a treetop adventure.

Cruise Vacations Start Here...Cruise Tour Experts by Chic Journey

หมายเหตุ: ***กรุณาเดินทาง และ ทริพยี่สิบส่วนตัวทุกอย่าง ผู้เดินทางต้องดูแลและรับผิดชอบด้วยตัวเอง
หากเกิดการสูญหายไม่ว่ากรณีใดๆ ทางบริษัทฯ ไม่สามารถรับผิดชอบใดๆ แทนได้
รายการท่องเที่ยวอาจมีการเปลี่ยนแปลงได้ ทั้งนี้ขึ้นกับสายการบินและเรือ และความปลอดภัยของผู้โดยสารเป็นสำคัญ

Suites, Fares

Suite Category	Fare / Per Person	sq m
Veranda Suite H	\$6,499	28.5
Deluxe Veranda Suite G2	\$6,699	28.6-33.5
Deluxe Veranda Suite G1	\$6,849	31.7
Serenity Suite F2	\$7,099	38.6-41.5
Serenity Suite F1	\$7,299	38.6-43.1
Concierge Suite E	\$7,999	41.5-43.1
Concierge Suite D	\$8,199	38.6-43.1
Penthouse Suite C	\$10,149	52.1-59.8
Penthouse Suite B	\$10,399	52.1-58.2
Penthouse Suite A	\$10,599	52.1-58.2
Seven Seas Suite SS	\$13,449	75.6
Explorer Suite ES	\$15,949	76.3-85.3
Grand Suite Aft	\$19,049	118.6-170.6
Grand Suite Forward	\$19,049	118.6-170.6
Signature Suite SG	\$26,049	176.1-195.8
Regent Suite RS	\$52,499	472.8

ราคานี้รวม:

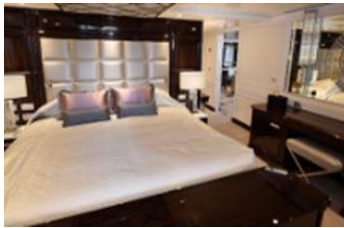
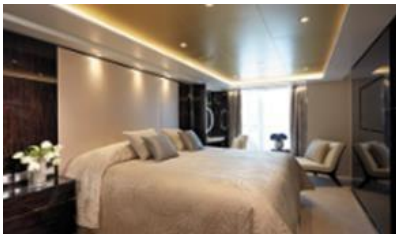
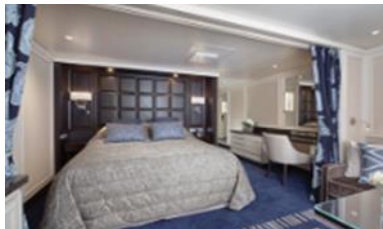
- ทัวร์บนฝั่ง (Shore Excursions) ทุกวันที่ลงจากเรือ
- เครื่องดื่มไม่จำกัด รวมทั้ง Fine Wines and Spirits
- Open Bars and Lounges รวมทั้ง Mini-Bar ในห้องพักที่เติมให้ทุกวัน
- ภาษีท่าเรือและค่าทิปพนักงาน
- ห้องอาหาร รวมถึงห้องอาหารพิเศษ
- WIFI*
- บริการซักเสื้อผ้า *(ไม่รวมค่ารีด)

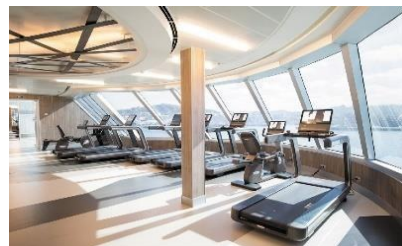
****สำหรับห้อง CONCIERGE SUITES ขึ้นไป รวมแพคเกจ โรงแรม 1 คืน ก่อนขึ้นเรือ**

****สำหรับห้อง PENTHOUSE SUITES ขึ้นไป รวม PERSONAL BUTLER**

หมายเหตุ

- ราคานี้รวม port charges และภาษีเรียบร้อยแล้ว
- ราคาอาจมีการเปลี่ยนแปลงโดยไม่แจ้งล่วงหน้าได้
- ราคานี้ขึ้นอยู่กับ การจอง 1 ห้องพักต่อ 2 ท่าน

ALL SUITES**REGENT SUITE (412.8 SQM)****MASTER SUITE (176.1-195.8 SQM)****GRAND SUITE (118.6-170.6 SQM)****EXPLORER SUITE (76.3-85.3 SQM)****SEVEN SEAS SUITE (75.6 SQM)****PENTHOUSE SUITE (52.1-58.2 SQM)****CONCIERGE SUITE / SUPERIOR SUITE
(38.6-43.1 SQM)****DELUXE VERANDA SUITE (31.7SQM)**

ONBOARD ACTIVITIES**CUISINES****SHOWS****SPA****CASINO****FITNESS****EVENING ENTERTAINMENT****DAYTIME ENRICHMENT****BOUTIQUES & MORE**