



Luxury Cruise Seven Seas Grandeur London (Southampton) to Belfast

Period 28 June – 02 July 2026 | 7 Nights

ราคาเริ่มต้น USD 6,640.- / ต่อท่าน

(**ราคาไม่รวม ตัวเครื่องบิน)

ITINERARY

DATE		PORT	ARRIVE	DEPART
Jun-28	Sun	London (Southampton), England	-	5:00 PM
Jun-29	Mon	Falmouth, United Kingdom	8:00 AM	6:00 PM
Jun-30	Tue	Cork (Cobh), Ireland	8:00 AM	6:00 PM
Jul-01	Wed	Waterford, Ireland	8:00 AM	6:00 PM
Jul-02	Thu	Cruising the Irish Sea	-	-
Jul-03	Fri	Holyhead, Wales	8:00 AM	6:00 PM
Jul-04	Sat	Liverpool, England	8:00 AM	6:00 PM
Jul-05	Sun	Belfast, Northern Ireland	6:20 AM	-

Day 1 London (Southampton), England
Depart 5:00 PM

Southampton is the largest city and port on the south coast of England. Tour the historic byways of Old Town with its Medieval walls and Tudor architecture. Spend an hour or two meandering along the pathways of Royal Victoria Country Park, picturesquely set along the waterfront on the grounds of a former military hospital where Florence Nightingale once worked. Southampton's maritime past can be explored by strolling along the Town Quay with its marina and lively bars and restaurants. It was here that the Titanic departed on its fateful journey and where the Mayflower sailed for the New World.

Day 2 Falmouth, United Kingdom
Arrive 8:00 AM | Depart 6:00 PM

Falmouth is a seaport on the River Fal. Falmouth is famous for its harbor. Together with Carrick Roads, it forms the third deepest natural harbor in the world, and the deepest in Western Europe. It is also famous for being the start or finish point of various round-the-world record-breaking voyages. Falmouth has proven a popular holiday destination and it is now primarily a tourist resort. It has long been a popular boating and water sports location.

Day 3 Cork (Cobh), Ireland
Arrive 8:00 AM | Depart 6:00 PM

Cork's history began in the 7th century with the founding of a monastery by St. Finbarr on a small alluvial island in the River Lee. The monastery and the settlement were later incorporated in the fortified base the Danes developed there. As a result of war and destruction throughout the following centuries, Cork has no medieval buildings left but boasts a few remains from the 18th century. The central area takes its architectural character from the early 19th century.

Day 4 Waterford, Ireland
Arrive 8:00 AM | Depart 6:00 PM

Nestled by the banks of the River Suir, Waterford is Ireland's oldest city, dating back to Viking times. Its impressive medieval city walls, cobbled, winding streets and colorful waterfront lend the town a charming feel. Reginald's Tower is Waterford's best known landmark. The building has been described as the oldest tower of mortared stone in Europe and today houses the city's Maritime and Civic Museum. Other attraction worth a visit are the City Hall, magnificently restored, and housing the Municipal Art Collection, and the Heritage Museum with its fine collection of Viking and Medieval artifacts. Of course no trip to Waterford would be complete without a visit to the world renowned Waterford Crystal factory. Each piece represents the culmination of light, heat and the skill of master craftsmen. The craftsmen transform glowing balls of crystal into elegant shapes using their artistic instinct, their breath and traditional tools. The perfect place to bring back a treasured memento of your cruise.

Day 5 Cruising the Irish Sea**Day 6 Holyhead, Wales**
Arrive 8:00 AM | Depart 6:00 PM

Holyhead stands on the far side of Anglesey, which is technically an island separated from Wales by the narrow Menai Straits. The distant mountains provide an ever-present backdrop, enticing the visitor to investigate their beauty. The rural charm of North Wales is juxtaposed with some unexpected features, for, perhaps to the casual visitor's surprise, this is an area that has participated in some of the great moments of our history.

Day 7 Liverpool, England
Arrive 8:00 AM | Depart 6:00 PM

Liverpool is a city and metropolitan borough in Merseyside, in North West England, along the eastern side of the Mersey Estuary. Inhabitants of Liverpool are referred to as Liverpudlians and nicknamed "Scousers," in reference to the local meal known as 'scouse', a form of stew. In 2004, Liverpool's waterfront was declared as a UNESCO World Heritage site, reflecting the city's importance in the development of the world's trading system and dock technology.

Day 8 Belfast, Northern Ireland
Depart 6:20 AM

Belfast lies snuggled into the rugged coast of Northern Ireland where the River Lagan flows to the sea. This Northern Ireland capital saw its earliest settlement in the early Middle Ages. At that time, a substantial stone fortress punctuated the horizon. Today, world travelers are eager to view her physical beauty and discover her renewed tranquility. Residents enjoy performances at the Grand Opera House, shop at trendy stores, and visit pubs lining The Golden Mile.

Suites, Fares

Suite Category	Fare / Per Person	sq m
Veranda Suite H	\$6,640	28.5
Deluxe Veranda Suite G2	\$6,760	28.6-33.5
Deluxe Veranda Suite G1	\$6,880	31.7
Serenity Suite F2	\$7,040	38.6-41.5
Serenity Suite F1	\$7,200	38.6-43.1
Concierge Suite E	\$7,762	41.5-43.1
Concierge Suite D	\$7,962	38.6-43.1
Penthouse Suite C	\$12,349	52.1-59.8
Penthouse Suite B	\$12,599	52.1-58.2
Penthouse Suite A	\$12,849	52.1-58.2
Seven Seas Suite SS	\$15,299	75.6
Grandeur Suite GN	\$16,899	76.3-85.3
Grand Suite Forward	\$18,649	118.6-170.6
Grand Suite Aft	\$18,649	118.6-170.6
Signature Suite SG	\$24,099	176.1-195.8
Regent Suite RS	\$52,499	472.7

ราคานี้รวม:

- ทัวร์บนฝั่ง (Shore Excursions) ทุกวันที่ลงจากเรือ
- เครื่องดื่มไม่จำกัด รวมทั้ง Fine Wines and Spirits
- Open Bars and Lounges รวมทั้ง Mini-Bar ในห้องพักที่เติมให้ทุกวัน
- ภาษีท่าเรือและค่าทิปพนักงาน
- ห้องอาหาร รวมถึงห้องอาหารพิเศษ
- WIFI*
- บริการซักเสื้อผ้า *(ไม่รวมค่ารีด)

****สำหรับห้อง CONCIERGE SUITES ขึ้นไป รวมแพคเกจ โรงแรม 1 คืน ก่อนขึ้นเรือ**

****สำหรับห้อง PENTHOUSE SUITES ขึ้นไป รวม PERSONAL BUTLER**

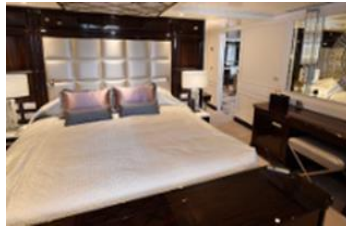
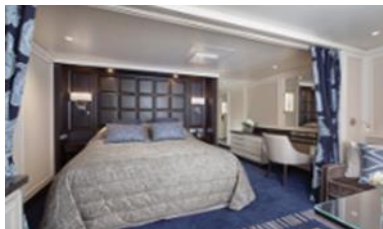


หมายเหตุ

- ราคานี้รวม port charges และภาษีเรียบร้อยแล้ว
- ราคาอาจมีการเปลี่ยนแปลงโดยไม่แจ้งล่วงหน้าได้
- ราคานี้ขึ้นอยู่กับ การจอง 1 ห้องพักต่อ 2 ท่าน

Cruise Vacations Start Here...Cruise Tour Experts by Chic Journey

หมายเหตุ: ***กระเป๋าเดินทาง และ ทริปพินส่วนตัวทุกอย่าง ผู้เดินทางต้องดูแลและรับผิดชอบด้วยตัวเอง
หากเกิดการสูญหายไม่ว่ากรณีใดๆ ทางบริษัทฯ ไม่สามารถรับผิดชอบใดๆ แทนได้
รายการท่องเที่ยวอาจมีการเปลี่ยนแปลงได้ ทั้งนี้ขึ้นกับสายการบินเรือ และความปลอดภัยของผู้โดยสารเป็นส ำคัญ

**ALL SUITES****REGENT SUITE (412.8 SQM)****MASTER SUITE (176.1-195.8 SQM)****GRAND SUITE (118.6-170.6 SQM)****EXPLORER SUITE (76.3-85.3 SQM)****SEVEN SEAS SUITE (75.6 SQM)****PENTHOUSE SUITE (52.1-58.2 SQM)****CONCIERGE SUITE /SUPERIOR SUITE
(38.6-43.1 SQM)****DELUXE VERANDA SUITE (31.7SQM)**

ONBOARD ACTIVITIES



CUISINES



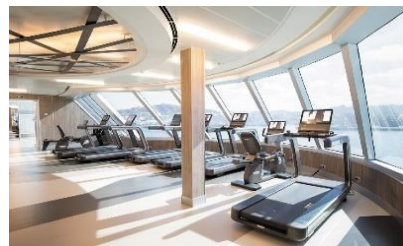
SHOWS



SPA



CASINO



FITNESS



EVENING ENTERTAINMENT



DAYTIME ENRICHMENT



BOUTIQUES & MORE