



# Luxury Cruise Seven Seas Voyager Copenhagen to Paris (Le Havre)

Period 11-19 September 2026 | 8 Nights

**ราคาเริ่มต้น USD 5,850.- / ต่อท่าน**

(\*\*ราคาไม่รวม ตัวเครื่องบิน)

## ITINERARY

DATE		PORT	ARRIVE	DEPART
Sep-11	Fri	Copenhagen, Denmark	-	5:00 PM
Sep-12	Sat	Lysekil, Sweden	8:00 AM	4:00 PM
Sep-13	Sun	Oslo, Norway	8:00 AM	5:00 PM
Sep-14	Mon	Mandal, Norway	8:00 AM	6:00 PM
Sep-15	Tue	Cruising the North Sea	-	-
Sep-16	Wed	Amsterdam (Ijmuiden), Netherlands	7:00 AM	6:00 PM
Sep-17	Thu	London (Tilbury), England	7:00 AM	7:00 PM
Sep-18	Fri	Bruges (Zeebrugge), Belgium	7:00 AM	4:00 PM
Sep-19	Sat	Paris (Le Havre), France	8:00 AM	-

**Day 1 Copenhagen, Denmark****Depart 5:00 PM**

Copenhagen, the royal capital of Denmark, is one of Europe's oldest capitals. It was a fishing village until the middle of the 12th century, but then grew in importance after being fortified in 1167. Because of its harbor, it soon became a place of commercial importance. Copenhagen has a long history well-integrated with today's modern life. Theaters, museums, art galleries and musical entertainment are among the attractions that make Copenhagen memorable.

**Day 2 Lysekil, Sweden****Arrive 8:00 AM | Depart 4:00 PM**

The seaside town of Lysekil is filled with incredible sights. Among them is Lysekil Church, whose granite was carved by hand and winched into place. The tower alone is 206 feet high and the spire rises more than 300 feet above sea level. Embark on a seal safari and see the rare Bohuslän in its true habitat or visit the Havets Hus, a saltwater aquarium where you can see and get the chance to touch some of the around 100 different species that live in the Gullmar Fjord.

**Day 3 Oslo, Norway****Arrive 8:00 AM | Depart 5:00 PM**

Oslo is Norway's capital and largest city. Located at the head of the Oslofjord, the city is encircled by wooded hills and snowcapped peaks. Norway is a maritime nation with Oslo being the chief port for sea services from the Continent and England. Throughout Oslo's 900-year history there have been many fires, and as a result it has a mixture of architectural styles. With a fairly compact city center, many of Oslo's attractions can be explored on foot.

**Day 4 Mandal, Norway****Arrive 8:00 AM | Depart 6:00 PM**

Nestled along the southern coast, Mandal boasts pristine beaches kissed by the gentle waves of the North Sea. Explore its quaint streets lined with colorful wooden houses, a testament to its vibrant maritime history. Delight in the colorful arts scene as galleries showcase local talent amidst breathtaking landscapes. Outdoor enthusiasts will revel in the lush forests and hiking trails that offer unparalleled views of the surrounding fjords. Indulge in fresh seafood delicacies at seaside eateries, savoring the flavors of the sea.

**Day 5 Cruising the North Sea****Day 6 Amsterdam (Ijmuiden), Netherlands****Arrive 7:00 AM | Depart 6:00 PM**

Just a short distance from Amsterdam, IJmuiden has beaches, sand dunes and picturesque scenery, as well as the country's biggest fish market. It's considered to be North Holland's gateway to the North Sea and it's at the head of a canal that leads directly to Holland's capital, Amsterdam. While the city has a reputation for free-spirited and very liberal lifestyles, Amsterdam is a cultural center of Europe, as exemplified in its more than 140 art galleries and 40 museums. In addition, it is famous for its baroque architecture, canals, and cobblestone streets where the favored mode of transportation is the bicycle.

**Day 7 London (Tilbury), England****Arrive 7:00 AM | Depart 7:00 PM**

Tilbury is near central London and just down the river from the iconic Tower Bridge; it is also the gateway to Kent and the charming towns of south east of England. Between touring the Tate and standing before the gates of Buckingham Palace, go for a stroll through Hyde Park's vast greenery toward Serpentine Lake, where you take a dip, go boating or enjoy a picnic. Among the lesser-known highlights of London is the British Library, where you may see a scribbled page of Beatles songwriting or a Leonardo da Vinci notebook. There are some stunning illuminated scripts and landmark-scientific items too, including very early photographs.

**Day 8 Bruges (Zeebrugge), Belgium****Arrive 7:00 AM | Depart 4:00 PM**

Zeebrugge is the gateway to Bruges, the capital of the Belgian province of West Flanders. Bruges was a wealthy city during medieval times when trade with Baltic ports flourished. The Zwin River, connecting Bruges with the North Sea, slowly began to narrow, marking the end of the city's great trade period. Today, visitors flock to Bruges to enjoy the charming, well-preserved medieval architecture lining the old and narrow roads and canals and to see some of Western Europe's finest artistic masterpieces.

**Day 9 Paris (Le Havre), France****Depart 8:00 AM**

Enjoy the scenic trip through the rolling French countryside to Paris and spend the day savoring it's gardens, museums and historic sites. Visit the Louvre, Notre Dame and the Eiffel Tower. Take a boat ride along the Seine and a stroll along the Champs Elysee. Or visit historic Rouen or the battlefields of Normandy.

**Suites, Fares**

Suite Category	Fare / Per Person	sq m
Deluxe Veranda Suite H	\$5,850	33.1
Deluxe Veranda Suite G	\$6,075	33.1
Deluxe Veranda Suite F	\$6,300	33.1
Concierge Suite E	\$6,710	33.1
Concierge Suite D	\$6,935	33.1
Penthouse Suite C	\$7,310	35.9-41.2
Penthouse Suite B	\$7,535	34.4
Penthouse Suite A	\$7,760	34.4
Seven Seas Suite Aft	\$12,799	50.6-66.1
Seven Seas Suite Forward	\$12,799	50.6-66.1
Voyager Suite VS	\$13,899	56.1
Grand Suite GS	\$16,199	81.4
Signature Suite SG Deck 11	\$21,599	124.0-130.3
Signature Suite SG Deck 7	\$21,599	124.0-130.3

### ราคานี้รวม:

- ทัวร์บนฝั่ง ( Shore Excursions ) ทุกวันที่ลงจากเรือ
- เครื่องดื่มไม่จำกัด รวมทั้ง Fine Wines and Spirits
- Open Bars and Lounges รวมทั้ง Mini-Bar ในห้องพักที่เติมให้ทุกวัน
- ภาษีท่าเรือและค่าทิปพนักงาน
- ห้องอาหาร รวมถึงห้องอาหารพิเศษ
- WIFI\*
- บริการซักเสื้อผ้า \*(ไม่รวมค่ารีด)

**\*\*สำหรับห้อง CONCIERGE SUITES ขึ้นไป รวมแพคเกจ โรงแรม 1 คืน ก่อนขึ้นเรือ**

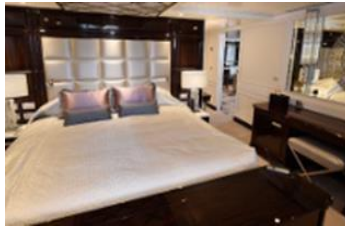
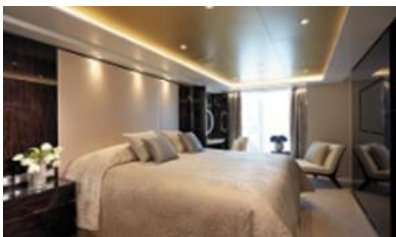
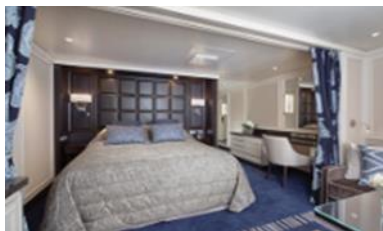
**\*\*สำหรับห้อง PENTHOUSE SUITES ขึ้นไป รวม PERSONAL BUTLER**

### หมายเหตุ

- ราคานี้รวม port charges และภาษีเรียบร้อยแล้ว
- ราคาอาจมีการเปลี่ยนแปลงโดยไม่แจ้งล่วงหน้าได้
- ราคานี้ขึ้นอยู่กับ การจอง 1 ห้องพักต่อ 2 ท่าน

### Cruise Vacations Start Here...Cruise Tour Experts by Chic Journey

หมายเหตุ: \*\*\*กระเป๋าสตางค์ และ ทรัพย์สินส่วนตัวทุกอย่าง ผู้เดินทางต้องดูแลและรับผิดชอบด้วยตัวเอง  
หากเกิดการสูญหายไม่ว่ากรณีใดๆ ทางบริษัทฯ ไม่สามารถรับผิดชอบใดๆ แทนได้  
รายการท่องเที่ยวอาจมีการเปลี่ยนแปลงได้ ทั้งนี้ขึ้นกับสายการบินเรือ และความปลอดภัยของผู้โดยสารเป็นสำคัญ

**ALL SUITES****REGENT SUITE (412.8 SQM)****MASTER SUITE (176.1-195.8 SQM)****GRAND SUITE (118.6-170.6 SQM)****EXPLORER SUITE (76.3-85.3 SQM)****SEVEN SEAS SUITE (75.6 SQM)****PENTHOUSE SUITE (52.1-58.2 SQM)****CONCIERGE SUITE /SUPERIOR SUITE  
(38.6-43.1 SQM)****DELUXE VERANDA SUITE (31.7SQM)**



## ONBOARD ACTIVITIES



CUISINES



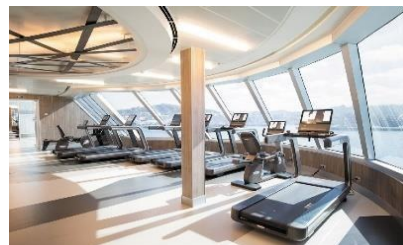
SHOWS



SPA



CASINO



FITNESS



EVENING ENTERTAINMENT



DAYTIME ENRICHMENT



BOUTIQUES & MORE