



CJN_D001_Seven Sea Grandeur Reykjavik to Reykjavik 2026



Luxury Cruise Seven Seas Grandeur Reykjavik to Reykjavik

Period 12-22 July 2026 | 10 Nights

ราคาเริ่มต้น USD 8,025.- / ต่อท่าน

(**ราคาไม่รวม ตัวเครื่องบิน)

ITINERARY

DATE		PORT	ARRIVE	DEPART
Jul-12	Sun	Reykjavik, Iceland	-	8:00 PM
Jul-13	Mon	Cruising the North Atlantic Ocean	-	-
Jul-14	Tue	Djupivogur, Iceland	8:00 AM	6:00 PM
Jul-15	Wed	Seydisfjordur, Iceland	7:00 AM	3:00 PM
Jul-16	Thu	Runavik (Faroe Islands), Denmark	11:00 AM	6:00 PM
Jul-17	Fri	Torshavn (Faroe Islands), Denmark	7:00 AM	8:00 PM
Jul-18	Sat	Cruising the North Atlantic Ocean	-	-
Jul-19	Sun	Akureyri, Iceland	8:00 AM	6:00 PM
Jul-20	Mon	Isafjordur, Iceland	8:00 AM	6:00 PM
Jul-21	Tue	Grundarfjordur, Iceland	8:00 AM	7:00 PM
Jul-22	Wed	Reykjavik, Iceland	7:00 AM	-

Day 1 Reykjavik, Iceland**Depart | 8:00 PM**

Just as Iceland is a unique country, rugged and remote, yet modern and enjoying Nordic standards of affluence, so Reykjavik is a beautifully diverse capital city. As Iceland's capital and its main center of population, the city of Reykjavik offers a fascinating mixture of the traditional and the very technically advanced. In addition, its natural beauty leaves a lasting impression. Visit the remarkable solfatara fields of Krýsuvík where you'll discover an expanse of steaming volcanic vents and boiling hot springs, framed dramatically by a range of multi-colored hills.

Day 2 Cruising the North Atlantic Ocean**Day 3 Djúpivogur, Iceland****Arrive 8:00 AM | Depart 6:00 PM**

Amongst the endless majesty of sheer-sided mountains etched with waterfalls in Iceland's sparsely populated Eastfjords, the small coastal village of Djúpivogur offers something magical: Mt. Baldstindur, a pyramid-shaped basalt mountain peaking at 3,507 feet that's widely believed to be a focus of mystical forces. Nestled by the picturesque fjord of Hamarsfjörður, the town was a trading center as far back as 1589. Visit a historic timber building called Langabúð, constructed in 1790, to admire the sculptures of Djúpivogur's own Ríkarsur Jónsson (1888-1977). Take a boat tour to the island of Papey – named after Irish hermits who sailed to Iceland in the 7th and 8th centuries – to see a colony of Atlantic Puffins.

Day 4 Seydisfjörður, Iceland**Arrive 7:00 AM | Depart 3:00 PM**

Cruising the fjord that ends with picturesque Seydisfjörður, it's easy to understand how its small populace produces such a thriving artistic community. Surrounded by soaring Mt. Bjölfur (3,560 feet) to the west and Strandartindur (3,314 feet) to the east, with waterfalls cascading in every direction, you'll undoubtedly feel the transformative powers of this Eastfjords town. A leisurely stroll past smartly painted wooden houses reveals small charms like the Bláa Kirkjan (Blue Church), the quaint star of many a Seydisfjörður photo, that perfectly embody this city's unique style. Watch for reindeer on hillsides and seals and porpoises in the cold waters.

Day 5 Runavík (Faroe Islands), Denmark**Arrive 11:00 AM | Depart 6:00 PM**

The remote, rugged and immensely beautiful Faroe Islands (from 'Føroyar', which translates to 'Sheep Islands') are an archipelago of 18 volcanic islands halfway between Norway and Iceland. The port city of Runavík lies on the south side of the extraordinarily scenic Eysturoy (East Island), where you'll find the region's highest mountains, ancient Viking settlements and the stunning, remote village of Gjógv. Tórshavn, the smallest capital city in the world, is located on Streymoy ('Stream Island' due to the currents in the sound between Streymoy and Eysturoy). It is the political, cultural and financial center of this self-governing region of the Kingdom of Denmark, and home to restaurants serving the best of Nordic gastronomy.

Day 6 Tórshavn (Faroe Islands), Denmark**Arrive 7:00 AM | Depart 8:00 PM**

Surrounded to the north and southwest by towering mountains with dramatic landscapes, Tórshavn is a picturesque port steeped in Viking history. Main attractions include Tinganes, the oldest part of town, with small wooden houses covered in turf roofs. Explore Nordic House, widely regarded as one of the finest examples of modern Nordic architecture; and Listasavn Føroya art museum. To fully experience the Faroe Islands' ancient history, visit the ruins of Magnus Cathedral.

Day 7 Cruising the North Atlantic Ocean

Day 8 Akureyri, Iceland**Arrive 8:00 AM | Depart 6:00 PM**

Explore the big city amenities and small village charm of Akureyri, on the shores of one of the world's longest fjords encircled by dramatic snow-capped mountains. As you stroll into town visit the newly built "temple of culture," HOF, which houses a theater, music hall, restaurant as well as the Tourist Information Center. Marvel at the variety of Arctic plants in the Botanical Garden of Akureyri. Stroll along Arts' Alley meandering through the museum, galleries and artists' studios. Enjoy the tax-free shop in the town center. Look for fine woolen knitwear, handmade ceramics, glassware, and silver jewelry.

Day 9 Isafjordur, Iceland**Arrive 8:00 AM | Depart 6:00 PM**

Discover the dazzling natural beauty of Isafjordur. With its striking steep mountains on three sides rising dramatically around a gorgeous bay, this is one of the most awe-inspiring places on Earth. Trace the area's history with a visit to the Maritime Museum in one of the oldest buildings dating back to the 18th century. A delightfully urban atmosphere prevails with major music schools, free concerts and festivals. Bring home fine handmade woolen items, nautical-themed articles, as well as arts and crafts. Feast on fresh baked goods and coffee at one of the many cafés.

Day 10 Grundarfjordur, Iceland**Arrive 8:00 AM | Depart 7:00 PM**

While the small fishing town of Grundarfjordur is itself a charming place to peruse, it's perhaps most well-known due its proximity to the most photographed mountain in all of Iceland. Mt. Kirkjufell (Church Mountain) was shaped across millions of years by the force of two glaciers, and today its steeple-like peak casts dramatic shadows at the edge of the sea. A three-pronged waterfall called Kirkjufellsfoss (Church Mountain Falls), often favored as a foreground, completes the epic scene. Visit the town's information center for exhibits celebrating Grundarfjordur's importance to Snæfellsnes Peninsula history, as well as photographs by Iclander Bering Cecilsson (1923-2002).

Day 11 Reykjavik, Iceland**Depart 7:00 AM**

Suites, Fares

Suite Category	Fare / Per Person	sq m
Veranda Suite H	\$8,025	28.5
Deluxe Veranda Suite G2	\$8,325	28.6-33.5
Deluxe Veranda Suite G1	\$8,550	31.7
Serenity Suite F2	\$8,925	38.6-41.5
Serenity Suite F1	\$9,150	38.6-43.1
Concierge Suite E	\$9,720	41.5-43.1
Concierge Suite D	\$10,020	38.6-43.1
Penthouse Suite C	\$15,899	52.1-59.8
Penthouse Suite B	\$16,249	52.1-58.2
Penthouse Suite A	\$16,599	52.1-58.2
Seven Seas Suite SS	\$20,299	75.6
Grandeur Suite GN	\$22,399	76.3-85.3
Grand Suite Forward	\$24,399	118.6-170.6
Grand Suite Aft	\$24,399	118.6-170.6
Signature Suite SG	\$31,749	176.1-195.8
Regent Suite RS	\$74,999	472.7

ราคานี้รวม:

- ทัวร์บนฝั่ง (Shore Excursions) ทุกวันที่ลงจากเรือ
- เครื่องดื่มไม่จำกัด รวมทั้ง Fine Wines and Spirits
- Open Bars and Lounges รวมทั้ง Mini-Bar ในห้องพักที่เติมให้ทุกวัน
- ภาษีท่าเรือและค่าทิปพนักงาน
- ห้องอาหาร รวมถึงห้องอาหารพิเศษ
- WIFI*
- บริการซักเสื้อผ้า *(ไม่รวมค่ารีด)

****สำหรับห้อง CONCIERGE SUITES ขึ้นไป รวมแพคเกจ โรงแรม 1 คืน ก่อนขึ้นเรือ**

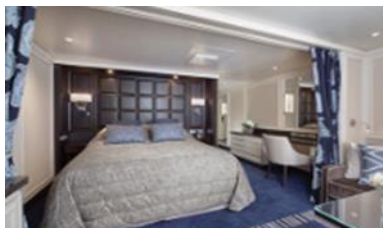
****สำหรับห้อง PENTHOUSE SUITES ขึ้นไป รวม PERSONAL BUTLER**

**หมายเหตุ**

- ราคานี้รวม port charges และภาษีเรียบร้อยแล้ว
- ราคาอาจมีการเปลี่ยนแปลงโดยไม่แจ้งล่วงหน้าได้
- ราคานี้ขึ้นอยู่กับ การจอง 1 ห้องพักต่อ 2 ท่าน

Cruise Vacations Start Here...Cruise Tour Experts by Chic Journey

หมายเหตุ: ***กระเป๋าเดินทาง และ ทรัพย์สินส่วนตัวทุกอย่าง ผู้เดินทางต้องดูแลและรับผิดชอบด้วยตัวเอง
หากเกิดการสูญหายไม่ว่ากรณีใดๆ ทางบริษัทฯ ไม่สามารถรับผิดชอบใดๆ แทนได้
รายการท่องเที่ยวอาจมีการเปลี่ยนแปลงได้ ทั้งนี้ขึ้นกับสายการบินเรือ และความปลอดภัยของผู้โดยสารเป็นสำคัญ

**ALL SUITES****REGENT SUITE (412.8 SQM)****MASTER SUITE (176.1-195.8 SQM)****GRAND SUITE (118.6-170.6 SQM)****EXPLORER SUITE (76.3-85.3 SQM)****SEVEN SEAS SUITE (75.6 SQM)****PENTHOUSE SUITE (52.1-58.2 SQM)****CONCIERGE SUITE /SUPERIOR SUITE
(38.6-43.1 SQM)****DELUXE VERANDA SUITE (31.7SQM)**

ONBOARD ACTIVITIES



CUISINES



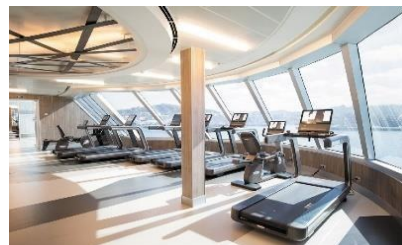
SHOWS



SPA



CASINO



FITNESS



EVENING ENTERTAINMENT



DAYTIME ENRICHMENT



BOUTIQUES & MORE