

# Luxury Cruise Seven Seas Navigator London (Dover) to Stockholm

Period 19-28 July 2026 | 9 Nights

**ราคาเริ่มต้น USD 5,520.- / ต่อท่าน**

(\*\*ราคาไม่รวม ตัวเครื่องบิน)

## ITINERARY

DATE		PORT	ARRIVE	DEPART
Jul-19	Sun	London (Dover), England	-	-
Jul-20	Mon	London (Dover), England	-	4:00 PM
Jul-21	Tue	Cruising the North Sea	-	-
Jul-22	Wed	Oslo, Norway	11:30 AM	-
Jul-23	Thu	Oslo, Norway	-	4:00 PM
Jul-24	Fri	Copenhagen, Denmark	11:00 AM	-
Jul-25	Sat	Copenhagen, Denmark	-	4:00 PM
Jul-26	Sun	Cruising the Baltic Sea	-	-
Jul-27	Mon	Stockholm, Sweden	8:00 AM	-
Jul-28	Tue	Stockholm, Sweden	-	-

**Day 1 London (Dover), England**

Made famous by its beautiful white cliffs, Dover is located on the Strait of Dover at England's closest point to continental Europe. Steeped in history, Dover's famous white chalk cliffs and its Medieval castle have guarded England from Roman to modern times. A tour of the castle offers views of the Secret Operations Room, the Communications Room, the Hospital and the Napoleonic casements. Stroll along the miles of National Trust countryside and coastline with its spectacular views of the white cliffs and the Dover Straits, and the landmark Victorian South Foreland Lighthouse. Visit the still working Crabble Corn Mill built in 1812 and the 3500 year old Bronze Age boat at the Dover Museum. Dover can be your gateway to London, with its exceptional museums, monuments, world-class shopping and restaurants.

**Day 2 London (Dover), England****Depart 4:00 PM**

Made famous by its beautiful white cliffs, Dover is located on the Strait of Dover at England's closest point to continental Europe. Steeped in history, Dover's famous white chalk cliffs and its Medieval castle have guarded England from Roman to modern times. A tour of the castle offers views of the Secret Operations Room, the Communications Room, the Hospital and the Napoleonic casements. Stroll along the miles of National Trust countryside and coastline with its spectacular views of the white cliffs and the Dover Straits, and the landmark Victorian South Foreland Lighthouse. Visit the still working Crabble Corn Mill built in 1812 and the 3500 year old Bronze Age boat at the Dover Museum. Dover can be your gateway to London, with its exceptional museums, monuments, world-class shopping and restaurants.

**Day 3 Cruising the North Sea****Day 4 Oslo, Norway****Depart 11:30 AM**

Oslo is Norway's capital and largest city. Located at the head of the Oslofjord, the city is encircled by wooded hills and snowcapped peaks. Norway is a maritime nation with Oslo being the chief port for sea services from the Continent and England. Throughout Oslo's 900-year history there have been many fires, and as a result it has a mixture of architectural styles. With a fairly compact city center, many of Oslo's attractions can be explored on foot.

**Day 5 Oslo, Norway****Depart 4:00 PM**

Oslo is Norway's capital and largest city. Located at the head of the Oslofjord, the city is encircled by wooded hills and snowcapped peaks. Norway is a maritime nation with Oslo being the chief port for sea services from the Continent and England. Throughout Oslo's 900-year history there have been many fires, and as a result it has a mixture of architectural styles. With a fairly compact city center, many of Oslo's attractions can be explored on foot.

**Day 6 Copenhagen, Denmark****Depart 11:00 AM**

Copenhagen, the royal capital of Denmark, is one of Europe's oldest capitals. It was a fishing village until the middle of the 12th century, but then grew in importance after being fortified in 1167. Because of its harbor, it soon became a place of commercial importance. Copenhagen has a long history well-integrated with today's modern life. Theaters, museums, art galleries and musical entertainment are among the attractions that make Copenhagen memorable.

**Day 7 Copenhagen, Denmark****Depart 4:00 PM**

Copenhagen, the royal capital of Denmark, is one of Europe's oldest capitals. It was a fishing village until the middle of the 12th century, but then grew in importance after being fortified in 1167. Because of its harbor, it soon became a place of commercial importance. Copenhagen has a long history well-integrated with today's modern life. Theaters, museums, art galleries and musical entertainment are among the attractions that make Copenhagen memorable.

**Day 8 Cruising the Baltic Sea**

**Day 9 Stockholm, Sweden****Depart 8:00 AM**

The “Venice of the North,” spanning 14 small islands at the outflow of Lake Mälär into the Baltic, Stockholm is the largest city in Scandinavia and architecturally one of the finest in the world, with broad streets, waterside parks and many pedestrian walkways. For a taste of the city, take a walking tour of Old Town, and particularly the Royal Palace and beautiful Riddarholm Church; take in the views from the observation deck in the Town Hall; or visit one of the Skeppsholmen Museums, including Skeppsholm Church (1842), the Museum of Architecture, the Museum of East Asian Art and the Modern Museum. A main attraction near the center of town is the Vasa Museum, on the island of Djurgården, displaying the almost fully intact 64-gun warship Vasa, that sank on her maiden voyage in 1628.

**Day 10 Stockholm, Sweden****Suites, Fares**

<b>Suite Category</b>	<b>Fare / Per Person</b>	<b>sq m</b>
Deluxe Window Suite H	\$5,520	28
Deluxe Window Suite G	\$5,760	28
Deluxe Veranda Suite F	\$6,880	33.1
Deluxe Veranda Suite E	\$7,280	33.1
Concierge Suite D	\$7,916	33.1
Penthouse Suite C	\$8,516	33.1
Penthouse Suite B	\$9,116	33.1
Penthouse Suite A	\$9,716	33.1
Navigator Suite NS	\$15,899	41.0-46.0
Grand Suite GS	\$18,399	63.8-68.7
Signature Suite SG	\$20,699	94.9-109.0

### ราคานี้รวม:

- ทัวร์บนฝั่ง ( Shore Excursions ) ทุกวันที่ลงจากเรือ
- เครื่องดื่มไม่จำกัด รวมทั้ง Fine Wines and Spirits
- Open Bars and Lounges รวมทั้ง Mini-Bar ในห้องพักที่เติมให้ทุกวัน
- ภาษีท่าเรือและค่าทิปพนักงาน
- ห้องอาหาร รวมถึงห้องอาหารพิเศษ
- WIFI\*
- บริการซักเสื้อผ้า \*(ไม่รวมค่ารีด)

**\*\*สำหรับห้อง CONCIERGE SUITES ขึ้นไป รวมแพคเกจ โรงแรม 1 คืน ก่อนขึ้นเรือ**

**\*\*สำหรับห้อง PENTHOUSE SUITES ขึ้นไป รวม PERSONAL BUTLER**

### หมายเหตุ

- ราคานี้รวม port charges และภาษีเรียบร้อยแล้ว
- ราคาอาจมีการเปลี่ยนแปลงโดยไม่แจ้งล่วงหน้าได้
- ราคานี้ขึ้นอยู่กับ การจอง 1 ห้องพักต่อ 2 ท่าน

### Cruise Vacations Start Here...Cruise Tour Experts by Chic Journey

หมายเหตุ: \*\*\*กระเป๋าสเดินทาง และ ทรัพย์สินส่วนตัวทุกอย่าง ผู้เดินทางต้องดูแลและรับผิดชอบด้วยตัวเอง  
หากเกิดการสูญหายไม่ว่ากรณีใดๆ ทางบริษัทฯ ไม่สามารถรับผิดชอบใดๆ แทนได้  
รายการท่องเที่ยวอาจมีการเปลี่ยนแปลงได้ ทั้งนี้ขึ้นกับสายการบินเรือ และความปลอดภัยของผู้โดยสารเป็นสําคัญ

## ALL SUITES



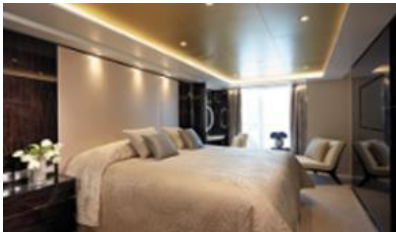
**REGENT SUITE (412.8 SQM)**



**MASTER SUITE (176.1-195.8 SQM)**



**GRAND SUITE (118.6-170.6 SQM)**



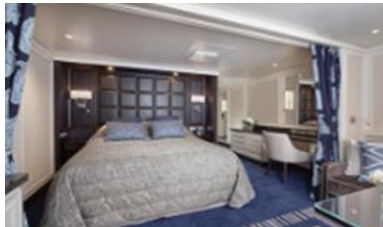
**EXPLORER SUITE (76.3-85.3 SQM)**



**SEVEN SEAS SUITE (75.6 SQM)**



**PENTHOUSE SUITE (52.1-58.2 SQM)**

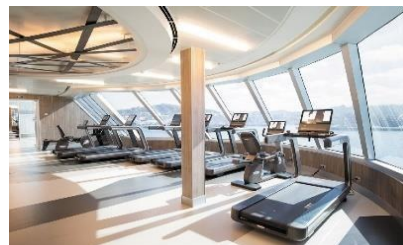


**CONCIERGE SUITE /SUPERIOR SUITE  
(38.6-43.1 SQM)**



**DELUXE VERANDA SUITE (31.7SQM)**



**ONBOARD ACTIVITIES****CUISINES****SHOWS****SPA****CASINO****FITNESS****EVENING ENTERTAINMENT****DAYTIME ENRICHMENT****BOUTIQUES & MORE**