



CTX_D001_Seven Seas Explorer Bangkok to Bali 25 26



Luxury Cruise
Seven Seas Explorer
BANGKOK (Laem Chabang)
 -TO-
BALI (Benoa)

Period 28 Nov – 12 Dec 2025 | 14 Nights

ราคาเริ่มต้น USD 7,200.- / ต่อท่าน

(ราคาไม่รวม ตัวเครื่องบิน)**

ITINERARY

DATE		PORT	ARRIVE	DEPART
Nov-28	Fri	Bangkok (Laem Chabang), Thailand	-	6:00 PM
Nov-29	Sat	Ko Samui, Thailand	9:00 AM	6:00 PM
Nov-30	Sun	Cruising the Gulf of Thailand	-	-
Dec-01	Mon	Ho Chi Minh City, Vietnam	10:00 AM	-
Dec-02	Tue	Ho Chi Minh City, Vietnam	-	2:00 PM
Dec-03	Wed	Nha Trang, Vietnam	8:00 AM	4:00 PM
Dec-04	Thu	Cruising the Gulf of Thailand	-	-
Dec-05	Fri	Singapore, Singapore	1:00 PM	-
Dec-06	Sat	Singapore, Singapore	-	6:00 PM
Dec-07	Sun	Cruising the South China Sea	-	-
Dec-08	Mon	Jakarta, Indonesia	7:00 AM	5:00 PM
Dec-09	Tue	Semarang (Java), Indonesia	10:00 AM	7:00 PM
Dec-10	Wed	Surabaya, Indonesia	9:00 AM	6:00 PM
Dec-11	Thu	Bali (Benoa), Indonesia	1:30 PM	-
Dec-12	Fri	Bali (Benoa), Indonesia	-	-

Day 1 Bangkok (Laem Chabang), Thailand**Depart 6:00 PM**

From the port city of Laem Chabang, discover the contrasting charms of Krung Thep (City of Angels) amongst the exotic temples, lavish palaces, teeming markets and urban skyline of Bangkok. Once a small trading center, Thailand's capital city thrums equally on vendors selling legendary street food, graceful Thai architecture and saffron-robed monks. Ride a ubiquitous tuk-tuk to Wat Pho, home to an immense, reclining, gold-plated Buddha. See floating grocery stores and teakwood houses built on stilts on a boat tour along the Chao Phaya River. After shopping for Thai silk and jewelry, dine on classic Bangkok dishes like pad Thai, Khao mun gai and mango sticky rice.

Day 2 Ko Samui, Thailand**Arrive 9:00 AM | Depart 6:00 PM**

An isolated, self-sufficient community called 'Coconut Island' until tourists began arriving in the early 1990s, Ko Samui is today the second most popular island destination in Thailand (after Phuket). You'll find a plethora of white-sand beaches, dazzling coral reefs and unspoiled rainforest dotted with waterfalls. At a picturesque plantation, learn how locals use monkeys to pick ripe coconuts from towering trees. See the Wat Phra Yai (Big Buddha Temple), a striking, 49-foot-tall gleaming gold statue that's beautifully silhouetted against an azure sky and sea. Dine on simply prepared yet incredibly tasty cuisine with a cold, coconut cocktail, lost in Thailand's bright-blue bliss.

Day 3 Cruising the Gulf of Thailand**Day 4 & 5 Ho Chi Minh City, Vietnam****Depart 10:00 AM | Depart 2:00 PM (Day 5)**

Sitting on a giant bend in the Sai Gon River, the quintessentially cosmopolitan Ho Chi Minh City (HCMC) boasts glistening skyscrapers, bustling food markets and magnificent French-Colonial buildings. Gain important perspectives of Vietnam's 20th-century war history at the War Remnants Museum and tunnels of C? Chi. Admire the grandeur of the 19th-century Notre Dame Cathedral, HCMC's iconic symbol, and nearby Central Post Office. Get a local's view of the frenetic city center while zipping through alleyways on a motorbike. Embrace the spirituality of the Jade Emperor Pagoda and 1960s architecture of the Reunification Palace, stopping to savor Vietnamese street food like pho (noodle soup) or savory crepes.

Day 6 Nha Trang, Vietnam**Arrive 8:00 AM | Depart 4:00 PM**

By far Vietnam's most popular seaside resort town, Nha Trang offers more than a turquoise bay ringed by a nearly four mile arc of golden sand and a lively promenade. Visit the impressive brick structures of the Po Nagar Cham Towers, built by the Cham civilization between the 7th and 12th centuries. Take in the nearly 80-foot-tall white Buddha of Long Son Pagoda and spectacular surroundings of Hai Duc Pagoda. Snap photos of grass-eating buffalo and terraced rice fields on a drive to villages that dot the countryside around Nha Trang. Or simply relax at a beachside bar with a coconut cocktail.

Day 7 Cruising the Gulf of Thailand**Day 8 & 9 Singapore, Singapore****Depart 1:00 PM | Depart 6:00 PM (Day 9)**

This island nation at the end of the Malaysian peninsula offers an extraordinary array of culture, history and cuisine. Embrace exotic sights and sounds strolling through Chinatown, the Arab Quarter or Little India. Head to the Boat Quay for unrivaled views of the harbor before dining at one of many international eateries. Shop along Orchard Road for treasures from every corner of the Pacific Rim; embark on a night safari at the Singapore Zoo or relax in the verdant shade of the Bukit Timah Nature Preserve. Wander the wondrously futuristic Gardens By the Bay before relaxing with a refreshing Singapore Sling at the iconic Raffles Hotel.

Day 10 Cruising the South China Sea

Day 11 Jakarta, Indonesia**Arrive 7:00 AM | Depart 5:00 PM**

Jakarta is the capital and largest city of Indonesia, located on the northwest coast of Java. It is sprawling with shopping malls and traditional markets, and is known for its inexpensive, but fair quality textile and fashion products. Don't miss the Istiqlal Mosque, the largest in Southeast Asia, and the National Monument in Merdeka Square. Visit the National Museum to learn more about the cultural heritage of Indonesia.

Day 12 Semarang (Java), Indonesia**Arrive 10:00 AM | Depart 7:00 PM**

Semarang is a city on the north coast of the island of Java, Indonesia. A major port during the Dutch colonial era, the city is known in Indonesia for its large ethnically Chinese population. Today, Semarang is a commercial port and administrative capital of Central Java. More a business center than a city for tourists, it is, however, an excellent gateway to the mountainous interior of Central Java and only some 60 miles away from world-famous Borobudur.

Day 13 Surabaya, Indonesia**Arrive 9:00 AM | Depart 6:00 PM**

From Buddhist temples to an historic Arab Quarter, the capital of Indonesia's East Java province is known as a gateway city but you'll find charms throughout its diverse neighborhoods. One of the most unusual is the House of Sampoerna, a well-preserved historical site built in the 19th-century Dutch colonial style that includes a museum, café and art gallery. You'll spot the turquoise, dome-shaped roof of the remarkable Al Akbar Mosque Surabaya from anywhere in the city. Opened in 2000, the stylish masterpiece provides spectacular views from atop the freestanding, ottoman-style minaret. Dine on a variety of East Javanese dishes made from locally caught seafood.

Day 14 & 15 Bali (Benoa), Indonesia**Arrive 1:30 PM**

Benoa's charms are most evident in Nusa Dua, one of the most beautiful beaches in already-legendary Bali. In this land of rice terraces, spectacular volcanoes and over 20,000 temples, the main destination is the stunning 17th-century royal temple complex of Pura Taman Ayun in nearby Mengwi, surrounded by a lotus-filled moat, giving it the feel of a garden sanctuary. Another favorite is the Sunset Temple, Tanah Lot, and don't miss the batik factories for that perfect gift or souvenir.

Cruise Vacations Start Here...Cruise Tour Experts by Chic Journey

หมายเหตุ: ***กระเป๋าเดินทาง และ ทรัพย์สินส่วนตัวทุกอย่าง ผู้เดินทางต้องดูแลและรับผิดชอบด้วยตัวเอง
หากเกิดการสูญหายไม่ว่ากรณีใดๆ ทางบริษัทฯ ไม่สามารถรับผิดชอบใดๆ แทนได้ รายการท่องเที่ยวอาจมีการเปลี่ยนแปลงได้
ทั้งนี้ขึ้นกับสายการบินเรือ และความปลอดภัยของผู้โดยสารเป็นสำคัญ

Suites, Fares

Suite Category	Full Fare	Special Offer	Availability
Veranda Suite H (28.5 sqm.)	\$14,799.00	\$6,420.00	SOLD OUT
Deluxe Veranda Suite G2 (31.7 sqm.)	\$15,099.00	\$6,600.00	SOLD OUT
Deluxe Veranda Suite G1 (31.7 sqm.)	\$15,399.00	\$6,780.00	SOLD OUT
Serenity Suite F2 (38.6-41.5 sqm.)	\$15,799.00	\$7,020.00	SOLD OUT
Serenity Suite F1 (38.6-41.5 sqm.)	\$16,099.00	\$7,200.00	Available
Concierge Suite E (38.6-41.5 sqm.)	\$16,799.00	\$7,672.00	Available
Concierge Suite D (38.6-41.5 sqm.)	\$17,099.00	\$7,852.00	Available
Penthouse Suite C (52.1-58.2 sqm.)	\$19,299.00	\$15,199.00	Available
Penthouse Suite B (52.1-58.2 sqm.)	\$20,399.00	\$15,599.00	Available
Penthouse Suite A (52.1-58.2 sqm.)	\$20,799.00	\$16,099.00	Available
Seven Seas Suite SS (75.6 sqm.)	\$23,999.00	\$20,199.00	Available
Explorer Suite ES (76.3-85.3 sqm.)	\$26,499.00	\$22,399.00	Available
Grand Suite GS (118.6-170.6 sqm.)	\$30,499.00	\$27,199.00	Available
Signature Suite SG (176.1-195.8 sqm.)	\$35,499.00	\$31,499.00	SOLD OUT
Regent Suite RS (412.8 sqm.)	\$88,399.00	\$83,999.00	SOLD OUT



ราคานี้รวม:

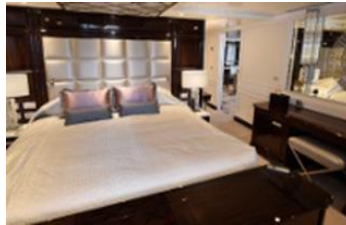
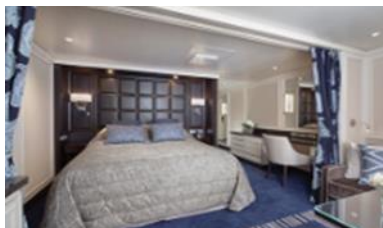
- ทัวรับนฝั่ง (Shore Excursions) ทุกวันที่ลงจากเรือ
- เครื่องดื่มไม่จำกัด รวมทั้ง Fine Wines and Spirits
- Open Bars and Lounges รวมทั้ง Mini-Bar ในห้องพักที่เติมให้ทุกวัน
- ภาษีท่าเรือและค่าทิปพนักงาน
- ห้องอาหาร รวมถึงห้องอาหารพิเศษ
- WIFI*
- บริการซักเสื้อผ้า *(ไม่รวมค่ารีด)

****สำหรับห้อง CONCIERGE SUITES ขึ้นไป รวมแพคเกจ โรงแรม 1 คืน ก่อนขึ้นเรือ**

****สำหรับห้อง PENTHOUSE SUITES ขึ้นไป รวม PERSONAL BUTLER**

หมายเหตุ

- ราคานี้รวม port charges และภาษีเรียบร้อยแล้ว
- ราคาอาจมีการเปลี่ยนแปลงโดยไม่แจ้งล่วงหน้าได้
- ราคานี้ขึ้นอยู่กับ การจอง 1 ห้องพักต่อ 2 ท่าน

**ALL SUITES****REGENT SUITE (412.8 SQM)****MASTER SUITE (176.1-195.8 SQM)****GRAND SUITE (118.6-170.6 SQM)****EXPLORER SUITE (76.3-85.3 SQM)****SEVEN SEAS SUITE (75.6 SQM)****PENTHOUSE SUITE (52.1-58.2 SQM)****CONCIERGE SUITE /SUPERIOR SUITE
(38.6-43.1 SQM)****DELUXE VERANDA SUITE (31.7SQM)**

ONBOARD ACTIVITIES



CUISINES



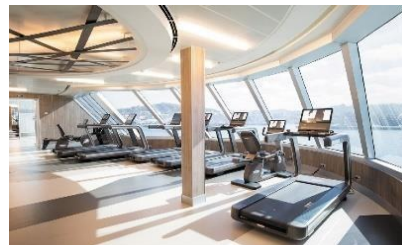
SHOWS



SPA



CASINO



FITNESS



EVENING ENTERTAINMENT



DAYTIME ENRICHMENT



BOUTIQUES & MORE