

CTX_D001_Seven Seas Explorer Tokyo to Bangkok (Laem Chabang) 25 26



Luxury Cruise Seven Seas Explorer

TOKYO -TO- BANGKOK (Laem Chabang)

Period 8 - 28 November 2025 | 20 Nights

ราคาเริ่มต้น USD 11,520.- / ต่อท่าน

(**ราคาไม่รวม ตัวเครื่องบิน)

ITINERARY

DATE		PORT	ARRIVE	DEPART
Nov-08	Sat	Tokyo, Japan	-	7:30 PM
Nov-09	Sun	Shimizu, Japan	7:00 AM	4:00 PM
Nov-10, 11	Mon	Osaka, Japan	-	-
Nov-12	Wed	Beppu, Japan	11:00 AM	8:00 PM
Nov-13	Thu	Cruising the Kanmon Strait	11:30 AM	7:30 PM
		Busan, South Korea		
Nov-14	Fri	Jeju, South Korea	8:00 AM	4:00 PM
Nov-15	Sat	Seoul (Incheon), South Korea	11:00 AM	6:30 PM
Nov-16	Sun	Cruising the Yellow Sea	-	-
Nov-17, 18, 19	Mon, Tue, Wed	Shanghai, China	2:30 PM	1:30 AM
Nov-20	Thu	Cruising the East China Sea	-	-
Nov-21	Fri	Hong Kong, China	9:00 AM	8:30 PM
Nov-22	Sat	Cruising the South China Sea	-	-
Nov-23	Sun	Nha Trang, Vietnam	12:00 PM	9:00 PM
Nov-24, 25	Mon, Tue	Ho Chi Minh City, Vietnam	4:00 PM	4:00 PM
Nov-26	Wed	Cruising the Gulf of Thailand	-	-
Nov-27, 28	Thu, Fri	Bangkok (Laem Chabang), Thailand	10:00 AM	-

Day 1 Tokyo, Japan**Depart 7:30 PM**

Once the modest fishing village of Edo, modern Tokyo is a sprawling metropolis of extraordinary neighborhoods that is the sum of its seemingly endless parts: The tiny bars of Shinjuku's Golden Gai. The culinary delights of Nihombashi. Akihabara's electronic gadgets and manga culture. The pottery shops of Asakusa. Nihombashi's shopping meccas. Choose from museums covering every aspect of Japanese history and culture – don't miss the treasures of the Tokyo National Museum. Visit the glorious Imperial Palace and Senso-ji temple in the ancient district of Asakusa. Dive into an unrivaled urban food scene that rewards the intrepid. And, of course, snap a selfie in Shibuya Crossing.

Day 2 Shimizu, Japan**Arrive 7:00 AM | Depart 4:00 PM**

On a clear day, you can see magnificent Mount Fuji from the lively Port of Shimizu. Visit The S-Pulse Dream Plaza to tour the Shimizu Sushi Museum with informative displays and models that show the history and variations of Japan's most famous fare. Stroll through the Kashi-no-Ichi Market, where some of the port's fresh seafood is sold and be sure to enjoy a delicious cup of tea.

Day 3 & 4 Osaka, Japan**Depart 10:30 AM | Depart 5:00 PM (Day 4)**

This charming city serves up amazing cuisine, superb shopping and a friendly spirit, with the restored Osaka Castle offering a spectacular lesson in Japanese history and culture. Osaka's nickname – Tenka no Daidokoro (The Nation's Kitchen) – originally referred to its Edo Period status as Japan's rice-trade hub; today it refers to the city's reputation as a gourmand's paradise. Take in a 360-degree view from Abeno Harukas – Japan's tallest skyscraper – before visiting the city's spectacular aquarium and through Dotonbori, Osaka's glittering heart. The immensely historical city of Kyoto is within reach, beckoning with spectacular architecture that includes thousands of Buddhist temples and Shinto shrines.

Day 5 Beppu, Japan**Arrive 11:00 AM | Depart 8:00 PM**

Lovers of hot spring resorts, rejoice. Perched hillside on the southern Japanese island of Kyushu, Beppu bubbles with life thanks to a preponderance of onsen (hot springs). Enjoy a variety of rejuvenating bath types, from heated sand to traditional steam to hot mud. As one of the country's most popular spots for enjoying a long, hot soak, most visitors find Beppu to be a delightful opportunity to absorb the more relaxed side of Japan's vibrant culture.

Day 6 Cruising the Kanmon Strait / Busan, South Korea**Arrive 11:30 AM | Depart 7:30 PM**

Located on the southeastern tip of the Korean Peninsula just two-and-a-half hours from Seoul, Busan is South Korea's second-largest city. With its deep harbor, it's also one of the largest commercial ports in the world. Often referred to as "the summer capital of South Korea," Busan is known for its exceptional beaches, scenic cliffs and ancient temples high in the mountains.

Day 7 Jeju, South Korea**Arrive 8:00 AM | Depart 4:00 PM**

Jeju Island is often called the "Island of the Gods," for its breathtaking landscape. UNESCO deemed the island's dormant volcano Hallasan as a Biosphere Reserve because of the abundance and diversity of plant and animal species. Enjoy delicious fare, such as fresh fish, squid, octopus and sea cucumber, as well as its famous Shitake mushrooms and honey, which has a distinct taste.

Day 8 Seoul (Incheon), South Korea**Arrive 11:00 AM | Depart 6:30 PM**

From Incheon, travel to the capital of South Korea, a city that artfully balances cutting-edge and traditional. Admire the Korean architecture of Cheong Wa Dae (Blue House), the official residence of the President of the Republic of Korea. Shop the antique shops and art galleries craft stores of Insadong in Seoul's art district. Learn centuries of Korean history at the National Museum. Be dazzled by the World Heritage-listed Changdeokgung, the most stunning of Seoul's five main palaces. In Incheon, visit a memorial to the landing operation led by General Douglas MacArthur in September 1950, a decisive victory that turned the course of the Korean War.

Day 9 Cruising the Yellow Sea**Day 10 11 & 12 Shanghai, China****Depart 2:30 PM | Depart 1:30 AM (Day 12)**

Shining brightly on the banks of the Yangtze River Delta in East China, this historic and glamorous city beckons with dazzling architecture, a universe of dining options and buzzing streetscapes. Stroll Shanghai legendary waterfront – known locally as ‘The Bund’ – for skyline views and colonial-era buildings. Pay homage to the famed pair of Buddhas at the Jade Buddha Temple in bustling downtown, learn the city’s fascinating story at the Shanghai History Museum in the Pudong district and head to the Old City to explore the 400-year-old Yuyuan Garden. You’ll be tempted by Shanghai’s fabled street food wherever you go, from crab shell pies to paper-thin soup dumplings.

Day 13 Cruising the East China Sea**Day 14 Hong Kong, China****Arrive 9:00 AM | Depart 8:30 PM**

From an iconic skyline overlooking a glorious harbor to lush green mountains and sprawling parks, Hong Kong has all you could want (and more) in a world-class city. Gain a deeper understanding of Hong Kong’s culture and history at Man Mo Temple, ride the world’s steepest funicular to Victoria Peak and cruise through a fishing village by sampan. Escape the urban bustle with a walk along the soft, golden sands of Repulse Bay. Dive into classic favorites like dai pai dong (street-food stalls) and yum cha (tea and dim sum) after conquering a dizzying assortment of shopping venues in this commercial hub of Asia.

Day 15 Cruising the South China Sea**Day 16 Nha Trang, Vietnam****Arrive 12:00 PM | Depart 9:00 PM**

By far Vietnam’s most popular seaside resort town, Nha Trang offers more than a turquoise bay ringed by a nearly four mile arc of golden sand and a lively promenade. Visit the impressive brick structures of the Po Nagar Cham Towers, built by the Cham civilization between the 7th and 12th centuries. Take in the nearly 80-foot-tall white Buddha of Long Son Pagoda and spectacular surroundings of Hai Duc Pagoda. Snap photos of grass-eating buffalo and terraced rice fields on a drive to villages that dot the countryside around Nha Trang. Or simply relax at a beachside bar with a coconut cocktail.

Day 17 & 18 Ho Chi Minh City, Vietnam**Depart 4:00 PM | Depart 4:00 PM (Day 18)**

Sitting on a giant bend in the Sai Gon River, the quintessentially cosmopolitan Ho Chi Minh City (HCMC) boasts glistening skyscrapers, bustling food markets and magnificent French-Colonial buildings. Gain important perspectives of Vietnam’s 20th-century war history at the War Remnants Museum and tunnels of C? Chi. Admire the grandeur of the 19th-century Notre Dame Cathedral, HCMC’s iconic symbol, and nearby Central Post Office. Get a local’s view of the frenetic city center while zipping through alleyways on a motorbike. Embrace the spirituality of the Jade Emperor Pagoda and 1960s architecture of the Reunification Palace, stopping to savor Vietnamese street food like pho (noodle soup) or savory crepes.

Day 19 Cruising the Gulf of Thailand**Day 20 & 21 Bangkok (Laem Chabang), Thailand****Arrive 10:00 AM**

From the port city of Laem Chabang, discover the contrasting charms of Krung Thep (City of Angels) amongst the exotic temples, lavish palaces, teeming markets and urban skyline of Bangkok. Once a small trading center, Thailand’s capital city thrums equally on vendors selling legendary street food, graceful Thai architecture and saffron-robed monks. Ride a ubiquitous tuk-tuk to Wat Pho, home to an immense, reclining, gold-plated Buddha. See floating grocery stores and teakwood houses built on stilts on a boat tour along the Chao Phaya River. After shopping for Thai silk and jewelry, dine on classic Bangkok dishes like pad Thai, Khao mun gai and mango sticky rice.

Cruise Vacations Start Here...Cruise Tour Experts by Chic Journey

หมายเหตุ: ***กระเป๋าดำเนินทาง และ ทรัพย์สินส่วนตัวทุกอย่าง ผู้เดินทางต้องดูแลและรับผิดชอบด้วยตัวเอง
หากเกิดการสูญหายไม่ว่ากรณีใดๆ ทางบริษัทฯ ไม่สามารถรับผิดชอบใดๆ แทนได้ รายการท่องเที่ยวอาจมีการเปลี่ยนแปลงได้
ทั้งนี้ขึ้นกับสายการบินและความสะดวกของผู้โดยสารเป็นสำคัญ

Suites, Fares

Suite Category	Full Fare	Special Offer	Availability
Veranda Suite H (28.5 sqm.)	\$18,799.00	\$11,119.00	SOLD OUT
Deluxe Veranda Suite G2 (31.7 sqm.)	\$18,999.00	\$11,520.00	Available
Deluxe Veranda Suite G1 (31.7 sqm.)	\$19,199.00	\$11,760.00	Available
Serenity Suite F2 (38.6-41.5 sqm.)	\$19,499.00	\$12,400.00	Available
Serenity Suite F1 (38.6-41.5 sqm.)	\$19,699.00	\$12,720.00	SOLD OUT
Concierge Suite E (38.6-41.5 sqm.)	\$20,599.00	\$13,800.00	Available
Concierge Suite D (38.6-41.5 sqm.)	\$20,799.00	\$14,120.00	Available
Penthouse Suite C (52.1-58.2 sqm.)	\$24,099.00	\$20,499.00	Available
Penthouse Suite B (52.1-58.2 sqm.)	\$24,399.00	\$20,899.00	Available
Penthouse Suite A (52.1-58.2 sqm.)	\$25,499.00	\$21,299.00	SOLD OUT
Seven Seas Suite SS (75.6 sqm.)	\$32,399.00	\$27,299.00	Available
Explorer Suite ES (76.3-85.3 sqm.)	\$35,799.00	\$31,299.00	Available
Grand Suite GS (118.6-170.6 sqm.)	\$39,099.00	\$37,199.00	Available
Signature Suite SG (176.1-195.8 sqm.)	\$46,199.00	\$44,899.00	Available
Regent Suite RS (412.8 sqm.)	\$120,999.00	\$119,999.00	Available



ราคานี้รวม:

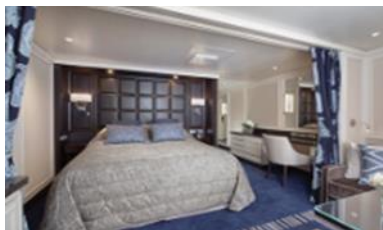
- ทัวร์บนฝั่ง (Shore Excursions) ทุกวันที่ลงจากเรือ
- เครื่องดื่มไม่จำกัด รวมทั้ง Fine Wines and Spirits
- Open Bars and Lounges รวมทั้ง Mini-Bar ในห้องพักที่เติมให้ทุกวัน
- ภาษีท่าเรือและค่าทิปพนักงาน
- ห้องอาหาร รวมถึงห้องอาหารพิเศษ
- WIFI*
- บริการซักเสื้อผ้า *(ไม่รวมค่ารีด)

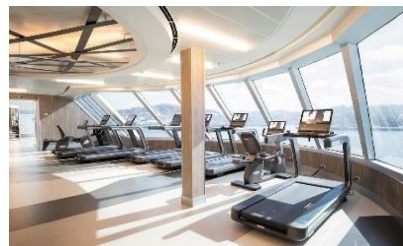
****สำหรับห้อง CONCIERGE SUITES ขึ้นไป รวมแพคเกจ โรงแรม 1 คืน ก่อนขึ้นเรือ**

****สำหรับห้อง PENTHOUSE SUITES ขึ้นไป รวม PERSONAL BUTLER**

หมายเหตุ

- ราคานี้รวม port charges และภาษีเรียบร้อยแล้ว
- ราคาอาจมีการเปลี่ยนแปลงโดยไม่แจ้งล่วงหน้าได้
- ราคานี้ขึ้นอยู่กับ การจอง 1 ห้องพักต่อ 2 ท่าน

**ALL SUITES****REGENT SUITE (412.8 SQM)****MASTER SUITE (176.1-195.8 SQM)****GRAND SUITE (118.6-170.6 SQM)****EXPLORER SUITE (76.3-85.3 SQM)****SEVEN SEAS SUITE (75.6 SQM)****PENTHOUSE SUITE (52.1-58.2 SQM)****CONCIERGE SUITE /SUPERIOR SUITE
(38.6-43.1 SQM)****DELUXE VERANDA SUITE (31.7SQM)**

ONBOARD ACTIVITIES**CUISINES****SHOWS****SPA****CASINO****FITNESS****EVENING ENTERTAINMENT****DAYTIME ENRICHMENT****BOUTIQUES & MORE**