



CTX_D001_Seven Sea Splendor ATHENS to ATHENS 2026



Luxury Cruise

Seven Seas Splendor

Athens (Piraeus) to Athens (Piraeus)

Period 4-11 August 2026 | 7 Nights

ราคาเริ่มต้น USD 6,699.- / ต่อท่าน

(**ราคาไม่รวม ตัวเครื่องบิน)

ITINERARY

DATE		PORT	ARRIVE	DEPART
Aug-04	Tue	Athens (Piraeus), Greece	-	7:00 PM
Aug-05	Wed	Nafplion, Greece	8:00 AM	7:00 PM
Aug-06	Thu	Santorini, Greece	8:00 AM	9:00 PM
Aug-07	Fri	Ephesus (Kusadasi), Turkey	8:00 AM	11:00 PM
Aug-08	Sat	Patmos, Greece	8:00 AM	7:30 PM
Aug-09	Sun	Aghios Nikolaos (Crete), Greece	8:00 AM	7:00 PM
Aug-10	Mon	Cruising the Sea of Crete	-	-
Aug-11	Tue	Athens (Piraeus), Greece	5:30 AM	-

Day 1 Athens (Piraeus), Greece**Depart 7:00 PM**

Piraeus is the gateway to the ancient city of Athens, known as the “Cradle of Western Civilization” because of its immense impact on cultural and political achievements throughout the world. Due mainly to tourism and the 2004 Olympics, Greece has redeveloped many sites in Athens. A historian’s delight, Athens is home to such magnificent wonders as: the Acropolis, the Parthenon, the atmospheric winding streets of the Plaka, Temple of Olympian Zeus and Temple of Athena Nike, and the Archaeological Museum with the world’s finest collection of ancient artifacts.

Day 2 Nafplion, Greece**Arrive 8:00 AM | Depart 7:00 PM**

Nauplion is one of Greece’s most beautiful towns with narrow streets, elegant Venetian houses and gracious neoclassical mansions. In the 13th century, following Byzantine rule, the Franks, Venetians and Turks each took possession, each leaving behind architectural monuments and traces of their culture. Take in the recently reopened Archeological Museum in Constitution Square, with a collection that includes pottery, jewelry, and some unique Mycenaean terracotta idols; and the National Gallery-Alexandros Soutzos Museum, with a permanent exhibition of paintings of the Greek War of Independence, as well as frequently changing temporary exhibits of local artists’ work.

Day 3 Santorini, Greece**Arrive 8:00 AM | Depart 9:00 PM**

With dramatic views of classic whitewashed houses clinging perilously to the side of the caldera and stunning beaches of white and red sand or black pebbles, it’s no wonder this may be the most photographed scenery in the world. Visit Ancient Akrotiri, the archeological site of a town frozen in time by ash from an eruption 3,600 years ago. Also worth a day trip is the Volcano of Santorini Palea (old) Kameni and Nea (new) Kameni , two small islands of black lava positioned in the centre of the basin of Santorini.

Day 4 Ephesus (Kusadasi), Turkey**Arrive 8:00 AM | Depart 11:00 PM**

Europe’s classical metropolis, Ephesus, was one of the largest cities in all of the Roman Empire, boasting one of the Seven Wonders of the Ancient World, the Temple of Artemis. Explore the ruins of its massive Theater, the Temple of Hadrian and the magnificent Celsus Library.

Day 5 Patmos, Greece**Arrive 8:00 AM | Depart 7:30 PM**

Discover the small, yet significant town of Patmos with its walled monastery and precariously perched whitewashed houses. Explore the tiny winding alleyways leading up to the imposing Monastery of St. John the Divine. Enter through the cave where he had his revelation in 95 AD. Have a look around the convent next door. Enjoy spectacular vistas of the pristine Aegean sparkling as far as the eye can see. Cool off at one of the many public beaches or discover your own private cove. Shop for sacred icons, exquisite jewelry, high quality leather goods, fine ceramics and original artwork. Enjoy a glass of local wine or tour a local olive grove.

Day 6 Aghios Nikolaos (Crete), Greece**Arrive 8:00 AM | Depart 7:00 PM**

Crete’s eastern corner is home to the resort of Agios Nikolaos, a port that leads the way to the island’s most significant ancient ruins. The ancient Minoans lived on Crete as far back as 2500 BC in a society that was by far the most advanced at the time. The ruins of the Minoan palaces at Knossos date from 1700 to 1500 BC and reveal remarkable achievements.

Day 7 Cruising the Sea of Crete**Day 8 Athens (Piraeus), Greece****Arrive 5:30 AM**

Suites, Fares

Suite Category	Full Fare	Special Offer	Availability
Veranda Suite H (28.5 sqm.)	\$9,499.00	\$6,399.00	SOLD OUT
Deluxe Veranda Suite G2 (28.5 sqm.)	\$9,799.00	\$6,699.00	Available
Deluxe Veranda Suite G1 (31.7 sqm.)	\$9,949.00	\$6,849.00	Available
Serenity Suite F2 (38.5 sqm.)	\$10,299.00	\$7,199.00	Available
Serenity Suite F1 (38.5 sqm.)	\$10,599.00	\$7,449.00	Available
Concierge Suite E (41.4 sqm.)	\$10,949.00	\$7,899.00	Available
Concierge Suite D (38.5 sqm.)	\$11,349.00	\$8,249.00	Available
Penthouse Suite C (52.2 sqm.)	\$12,899.00	\$9,799.00	Available
Penthouse Suite B (52.1 sqm.)	\$13,099.00	\$10,149.00	Available
Penthouse Suite A (52.1 sqm.)	\$13,349.00	\$10,499.00	Available
Seven Seas Suite SS (75.6 sqm.)	\$15,799.00	\$12,699.00	Available
Splendor Suite SP (76.2 sqm.)	\$20,049.00	\$15,599.00	Available
Grand Suite GS (118.6 sqm.)	\$22,499.00	\$17,399.00	Available
Signature Suite SG (176 sqm.)	\$24,299.00	\$19,699.00	Available
Regent Suite RS (412 sqm.)	\$45,999.00	\$41,999.00	SOLD OUT

ราคานี้รวม:

- ทัวร์บนฝั่ง (Shore Excursions) ทุกวันที่ลงจากเรือ
- เครื่องดื่มไม่จำกัด รวมทั้ง Fine Wines and Spirits
- Open Bars and Lounges รวมทั้ง Mini-Bar ในห้องพักที่เติมให้ทุกวัน
- ภาษีท่าเรือและค่าทิปพนักงาน
- ห้องอาหาร รวมถึงห้องอาหารพิเศษ
- WIFI*
- บริการซักเสื้อผ้า *(ไม่รวมค่ารีด)

****สำหรับห้อง CONCIERGE SUITES ขึ้นไป รวมแพคเกจ โรงแรม 1 คืน ก่อนขึ้นเรือ**

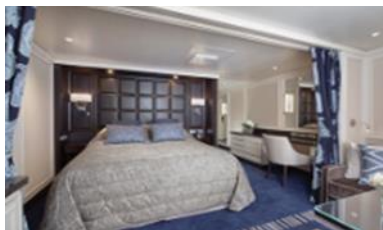
****สำหรับห้อง PENTHOUSE SUITES ขึ้นไป รวม PERSONAL BUTLER**

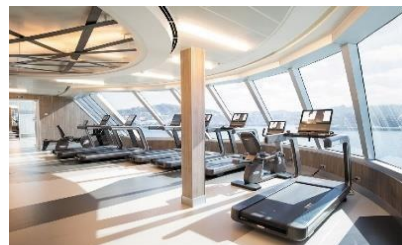
หมายเหตุ

- ราคานี้รวม port charges และภาษีเรียบร้อยแล้ว
- ราคาอาจมีการเปลี่ยนแปลงโดยไม่แจ้งล่วงหน้าได้
- ราคานี้ขึ้นอยู่กับ การจอง 1 ห้องพักต่อ 2 ท่าน

Cruise Vacations Start Here...Cruise Tour Experts by Chic Journey

หมายเหตุ: ***กระเป๋าสเดินทาง และ ทรัพย์สินส่วนตัวทุกอย่าง ผู้เดินทางต้องดูแลและรับผิดชอบด้วยตัวเอง
หากเกิดการสูญหายไม่ว่ากรณีใดๆ ทางบริษัทฯ ไม่สามารถรับผิดชอบใดๆ แทนได้
รายการท่องเที่ยวอาจมีการเปลี่ยนแปลงได้ ทั้งนี้ขึ้นกับสายการบินเรือ และความปลอดภัยของผู้โดยสารเป็นสำคัญ

**ALL SUITES****REGENT SUITE (412.8 SQM)****MASTER SUITE (176.1-195.8 SQM)****GRAND SUITE (118.6-170.6 SQM)****EXPLORER SUITE (76.3-85.3 SQM)****SEVEN SEAS SUITE (75.6 SQM)****PENTHOUSE SUITE (52.1-58.2 SQM)****CONCIERGE SUITE /SUPERIOR SUITE
(38.6-43.1 SQM)****DELUXE VERANDA SUITE (31.7SQM)**

**ONBOARD ACTIVITIES****CUISINES****SHOWS****SPA****CASINO****FITNESS****EVENING ENTERTAINMENT****DAYTIME ENRICHMENT****BOUTIQUES & MORE**