



CTX_D001_Seven Seas Explorer Vancouver to Seattle 2026



Luxury Cruise
Seven Seas Explorer
VANCOUVER -TO- SEATTLE
ราคาเริ่มต้น USD 7,799.- / ต่อท่าน
 (**ราคาไม่รวม ตัวเครื่องบิน)

ITINERARY

DATE		PORT	ARRIVE	DEPART
Sep-09	Wed	Vancouver, British Columbia	-	5:00 PM
Sep-10	Thu	Cruising the Inside Passage	-	-
Sep-11	Fri	Ketchikan, Alaska	7:00 AM	5:00 PM
Sep-12	Sat	Juneau, Alaska	11:00 AM	7:00 PM
Sep-13	Sun	Skagway, Alaska	8:00 AM	5:00 PM
Sep-14	Mon	Icy Strait (Hoonah), Alaska	8:00 AM	5:00 PM
Sep-15	Tue	Klawock, Alaska	7:00 AM	4:00 PM
Sep-16	Wed	Cruising the Inside Passage	-	-
Sep-17	Thu	Victoria, British Columbia	8:00 AM	6:00 PM
Sep-18	Fri	Seattle, Washington	6:00 AM	-

Day 1 Vancouver, British Columbia**Depart 5:00 PM**

This gleaming city in the midst of natural splendor has its origins in a saloon built for miners on their way to the Yukon. Walk the cobblestone streets of Gastown for a sense of Vancouver's frontier history in what's become one of the city's most vibrant and unique areas. Explore the second largest Chinatown in North America on your way to Stanley Park, home to soaring old-growth trees and a spectacular collection of First Nation totem poles. Breathtaking views abound: Travel to Vancouver's Peak on the Grouse Mountain skyride and walk the Capilano Suspension Bridge for a treetop adventure.

Day 2 Cruising the Inside Passage**Day 3 Ketchikan, Alaska**

Arrive 7:00 AM | Depart 5:00 PM

Ketchikan, on the southwest side of Revillagigedo Island, grew up around salmon canneries and sawmills. Ketchikan's name supposedly comes from the native term "Katch Kanna", which roughly translates: "spread wings of a thundering eagle." At one time Ketchikan was proclaimed the "Salmon Capital of the World." An outstanding collection of totem poles make a visit to Ketchikan essential for anyone interested in Native art. Travelers flock to Ketchikan for their first look at the North Country, and are rarely disappointed.

Day 4 Juneau, Alaska

Arrive 11:00 AM | Depart 7:00 PM

In 1880, Joe Juneau and Richard Harris were prospecting for gold with the help of Indian guides. Here they discovered nuggets "as large as beans" at the mouth of the aptly named Gold Creek. Out of their discoveries came three of the largest gold digs in the world where more than \$150 million in gold was mined. Juneau's surrounding beauty and natural wonders have attracted cruise ship travelers for over a century, with steamship companies bringing tourists here since the early 1880's.

Day 5 Skagway, Alaska

Arrive 8:00 AM | Depart 5:00 PM

Beginning in 1897, this frontier town at the northernmost point of the Inside Passage was the starting place for more than 40,000 gold-rush stampedeers who headed to the Yukon primarily by way of the Chilkoot Trail. Immerse yourself in the colorful history and characters of the Klondike Gold Rush era in downtown Skagway, where over 20 historic buildings have been preserved and locals in period costumes detail the town's bawdy history. Ride the historic narrow-gauge White Pass & Yukon Route Railway as it climbs 3,000 feet high into immensely picturesque mountains, taking in views of Bridal Veil Falls and the peaks of Inspiration Point.

Day 6 Icy Strait (Hoonah), Alaska

Arrive 8:00 AM | Depart 5:00 PM

With pine trees as tall as skyscrapers, waters teeming with humpback whales and bald eagles soaring in the sky, this is the epitome of the Alaskan hinterland. Visit the Native Theater and Heritage Center to see Tlingit tribal members enact their history through song and dance, followed by a sumptuous meal of classic Alaskan seafood dishes. Take in breathtaking views while riding a gondola up Hoonah Mountain, watching for Sitka black-tailed deer among towering spruce and western hemlock trees. Drive deep into the remote Spasski River Valley to a raised observation platform to look for grizzly bears.

Day 7 Klawock, Alaska

Arrive 7:00 AM | Depart 4:00 PM

Nestled amongst lush rainforest typical of the Inside Passage, Klawock is an authentic pioneer town on the rugged central-western coast of Prince of Wales Island. Thriving wildlife that includes bears drawn to the salmon-rich Klawock River and extensive collections of totem poles promise a genuine Alaskan experience at this newly constructed port. Besides jaw-dropping wilderness, Klawock boasts an abundance of Tlingit cultural practices. At a carving shed, watch expert Tlingit artisans demonstrate the skills that have made their totem poles legendary.

Day 8 Cruising the Inside Passage**Day 9 Victoria, British Columbia****Arrive 8:00 AM | Depart 6:00 PM**

Victoria is a picture-perfect city exuding old-world charm, with fragrant and colorful flowers everywhere. Founded in 1843 by James Douglas of the Hudson's Bay Company, it was first known as Fort Victoria. By 1848, Vancouver Island was made a British colony. In 1868, Vancouver Island was incorporated with mainland British Columbia. Although it is a port city, Victoria is not as industrially oriented as Vancouver. The harbors, especially Inner Harbour, are dotted with pleasure crafts, ferries, and floatplanes.

Day 10 Seattle, Washington**Depart 6:00 AM**

Named after the Native American chief Noah Sealth, who in 1851 gave a friendly reception to the first white settlers, Seattle was originally no more than a village of trappers and loggers. Its prosperity came first with the Klondike gold rush of 1897, and subsequently with its two natural resources, lumber and fish. The millions of ties that went into the construction of the first western railroads came mostly from around Seattle and from the state of Washington.

Suites, Fares

Suite Category	Fare / Per Person	sq m
Veranda Suite H	\$7,799	28.5
Deluxe Veranda Suite G2	\$8,099	28.6-33.5
Deluxe Veranda Suite G1	\$8,349	31.7
Serenity Suite F2	\$8,699	38.6-41.5
Serenity Suite F1	\$8,999	38.6-43.1
Concierge Suite E	\$9,549	41.5-43.1
Concierge Suite D	\$9,849	38.6-43.1
Penthouse Suite C	\$12,499	52.1-59.8
Penthouse Suite B	\$12,749	52.1-58.2
Penthouse Suite A	\$12,999	52.1-58.2
Seven Seas Suite SS	\$16,099	75.6
Explorer Suite ES	\$18,899	76.3-85.3
Grand Suite Aft	\$22,699	118.6-170.6
Grand Suite Forward	\$22,699	118.6-170.6
Signature Suite SG	\$30,699	176.1-195.8
Regent Suite RS	\$67,499	472.8

ราคานี้รวม:

- ทัวร์บนฝั่ง (Shore Excursions) ทุกวันที่ลงจากเรือ
- เครื่องดื่มไม่จำกัด รวมทั้ง Fine Wines and Spirits
- Open Bars and Lounges รวมทั้ง Mini-Bar ในห้องพักที่เติมให้ทุกวัน
- ภาษีท่าเรือและค่าทิปพนักงาน
- ห้องอาหาร รวมถึงห้องอาหารพิเศษ
- WIFI*
- บริการซักเสื้อผ้า *(ไม่รวมค่ารีด)

****สำหรับห้อง CONCIERGE SUITES ขึ้นไป รวมแพคเกจ โรงแรม 1 คืน ก่อนขึ้นเรือ**

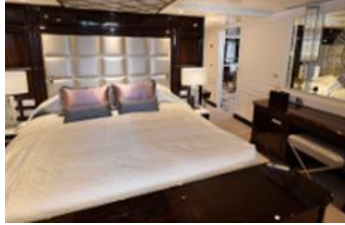
****สำหรับห้อง PENTHOUSE SUITES ขึ้นไป รวม PERSONAL BUTLER**

หมายเหตุ

- ราคานี้รวม port charges และภาษีเรียบร้อยแล้ว
- ราคาอาจมีการเปลี่ยนแปลงโดยไม่แจ้งล่วงหน้าได้
- ราคานี้ขึ้นอยู่กับ การจอง 1 ห้องพักต่อ 2 ท่าน

Cruise Vacations Start Here...Cruise Tour Experts by Chic Journey

หมายเหตุ: ***กระเป๋าสเดินทาง และ ทรัพย์สินส่วนตัวทุกอย่าง ผู้เดินทางต้องดูแลและรับผิดชอบด้วยตัวเอง
หากเกิดการสูญหายไม่ว่ากรณีใดๆ ทางบริษัทฯ ไม่สามารถรับผิดชอบใดๆ แทนได้
รายการท่องเที่ยวอาจมีการเปลี่ยนแปลงได้ ทั้งนี้ขึ้นกับสายการบินเรือ และความปลอดภัยของผู้โดยสารเป็นสำคัญ

**ALL SUITES****REGENT SUITE (412.8 SQM)****MASTER SUITE (176.1-195.8 SQM)****GRAND SUITE (118.6-170.6 SQM)****EXPLORER SUITE (76.3-85.3 SQM)****SEVEN SEAS SUITE (75.6 SQM)****PENTHOUSE SUITE (52.1-58.2 SQM)****CONCIERGE SUITE /SUPERIOR SUITE
(38.6-43.1 SQM)****DELUXE VERANDA SUITE (31.7SQM)**

ONBOARD ACTIVITIES



CUISINES



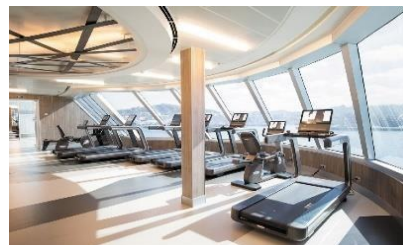
SHOWS



SPA



CASINO



FITNESS



EVENING ENTERTAINMENT



DAYTIME ENRICHMENT



BOUTIQUES & MORE